



**PORT OF BELLINGHAM**  
*Washington State*

---

## Real Estate Leasing Opportunities

---

September 2022

Bayview Building

Bellwether Building

Airport Industrial Park

---



Scan QR to visit our website and see our available properties online

---



## Partner with the Port of Bellingham!

### BROKERS WELCOME

For the Port's Real Estate Broker Compensation Policy, please contact the Port of Bellingham's Real Estate Division

---

**Judy Harvey, Designated Broker**

**Senior Property Manager**

[judyh@portofbellingham.com](mailto:judyh@portofbellingham.com)

Office: 360- 676-2500

Cell: 360-319-9574





**PORT OF BELLINGHAM**  
*Washington State*

## Office Space Available

- ◆ Bellwether Building - 11 Bellwether Way
- ◆ Suite 305 - 2,600 sf Available  
\$29.92/sf/yr modified gross
- ◆ Located at Bellwether on the Bay next to the beautiful Hotel Bellwether just a few steps from the Squalicum Harbor Marina
- ◆ Neighboring tenants include a wide range of restaurants, and offices

**Judy Harvey,**  
**Designated Broker,**  
**Senior Property Manager**

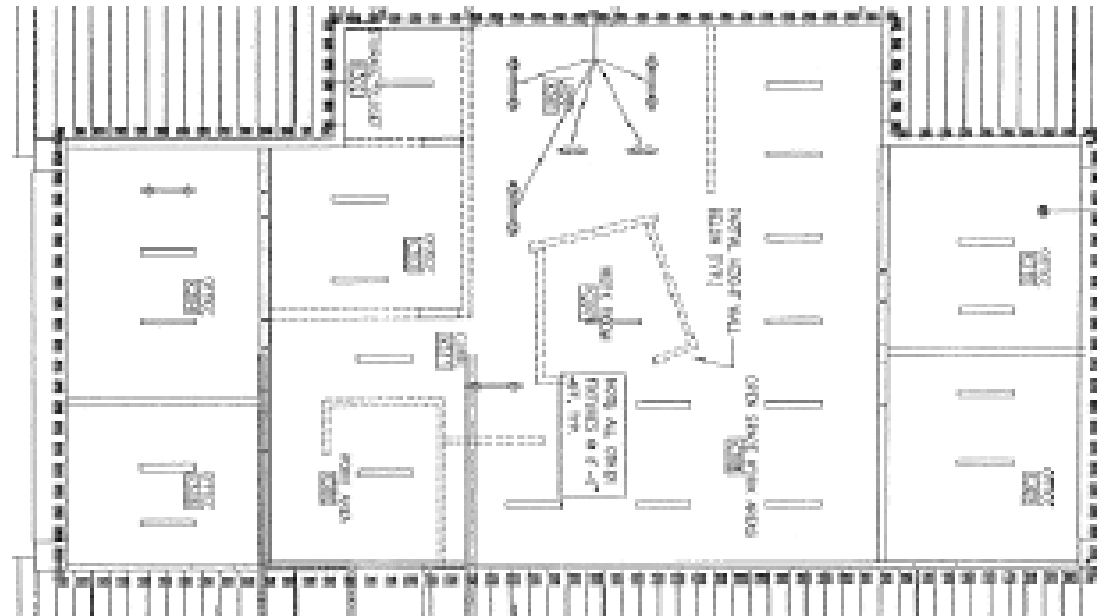
[judyh@portofbellingham.com](mailto:judyh@portofbellingham.com)

Office: 360- 676-2500

Cell: 360-319-9574



**BELLWETHER  
SUITE 305**





**PORT OF BELLINGHAM**  
*Washington State*

## Office Space Available

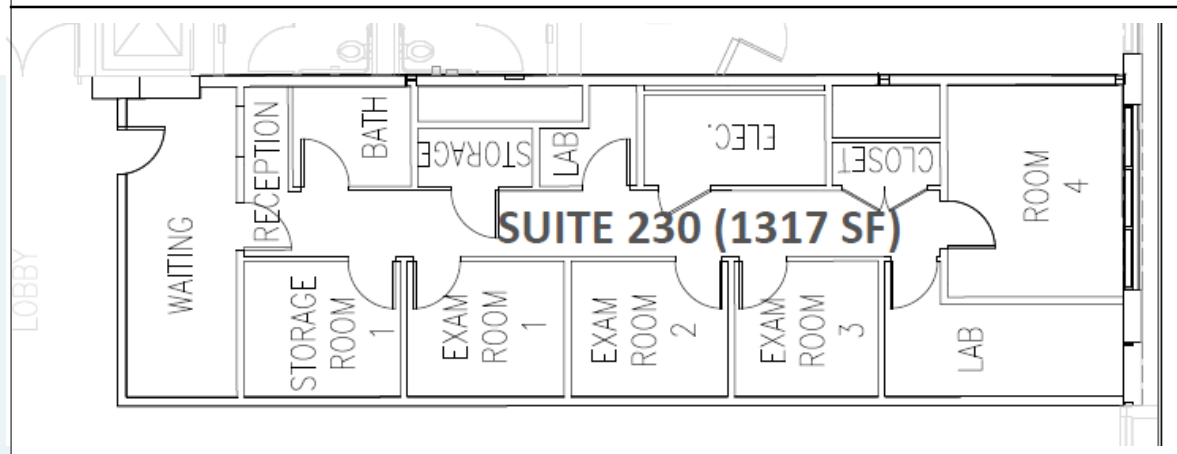
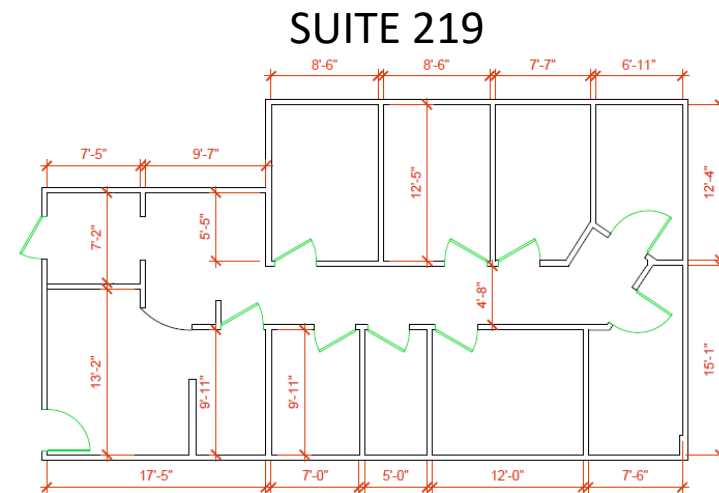
- ◆ Bayview Building - 12 Bellwether Way
- ◆ Suite 219: 1,317 sf – Office Space  
\$28.48/sf/yr modified gross
- ◆ Suite 230: 1,317 sf – Office Space  
\$28.48/sf/yr modified gross
- ◆ Located at Bellwether on the Bay next to the beautiful Hotel Bellwether just a few steps from the Squaticum Harbor Marina
- ◆ Neighboring tenants include a wide range of restaurants, and offices

**Judy Harvey,**  
**Designated Broker,**  
**Senior Property Manager**

[judyh@portofbellingham.com](mailto:judyh@portofbellingham.com)

Office: 360- 676-2500

Cell: 360-319-9574





**PORT OF BELLINGHAM**  
*Washington State*

## Airport Industrial Park

### Development Opportunities

- DA#18: 4.43 acres
- DA#17: 6.27 acres
- DA#15: 2.23 acres
- DA#8: 1.53 acres
- DA#7: 3.83 acres
- DA#4: 2.49 acres
- Easy access to Interstate 5 and the Bellingham Int. Airport
- Water and Sewer Available
- Zoning Light Impact Industrial
- Rates to be Negotiated

**Annika Bjorkman,**

**Senior Property Manager**

annikab@portofbellingham.com

Office: 360- 676-2500

Cell: 360-927-1807

